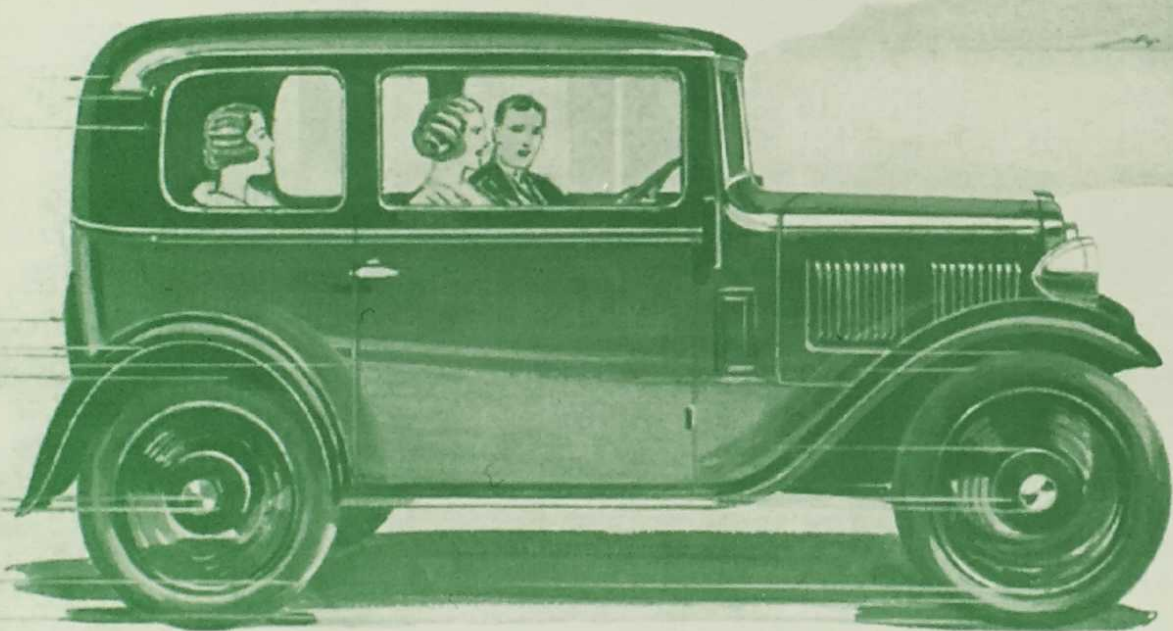


THE FAMOUS

Austin

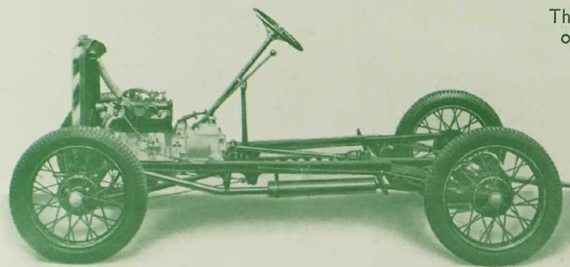
SEVEN



THE AUSTIN MOTOR CO LTD · LONGBRIDGE · BIRMINGHAM

479-483 OXFORD ST. LONDON W.1.
(NEAR MARBLE ARCH)

FEATURES OF THE *Austin* 'SEVEN'



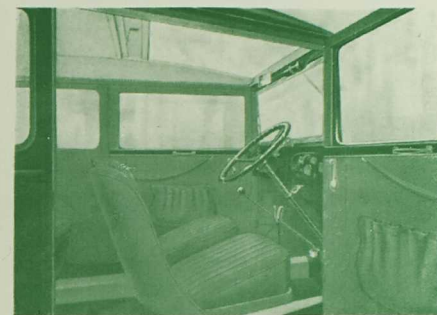
The best, most dependable, economical and efficient Seven h.p. car on the market. Incorporating a number of important patents which contribute to its undoubted success.

The four-cylinder engine with detachable head, is water cooled. It has a large, strong crankshaft, balanced statically and dynamically, with roller bearings. The pistons are of low expansion aluminium alloy. It is mounted on rubber bushes to absorb vibration.

The top and third speeds have synchromesh engagement, and the second, third and top speed gears are in constant mesh to ensure silent running.

Efficient four wheel brakes, applied either by hand or foot. Special springing design assisted by shock absorbers to front and rear of car.

Simplicity of arrangement and accessibility of all parts needing attention have made the Austin Seven the owner-driver's favourite.

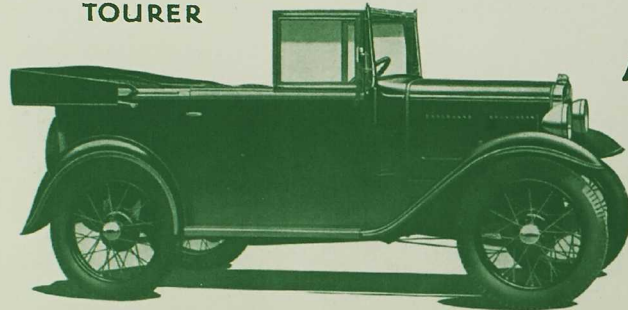


THE FAMOUS

Austin

SEVEN

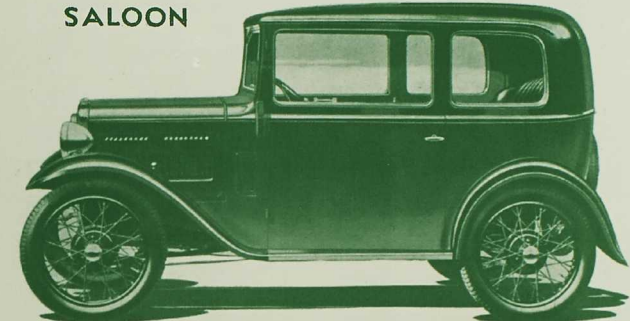
TOURER



The Tourer is a genuine four seater, with a hood and side curtains that defy the worst weather, and are easily erected or taken down. Both front seats are adjustable.

PRICE AT WORKS
£112 10s.

SALOON



The Saloon is a delightfully attractive miniature car with surprisingly commodious interior accommodation for four adults. Both front seats are adjustable, all seats are fitted with pneumatic cushions.

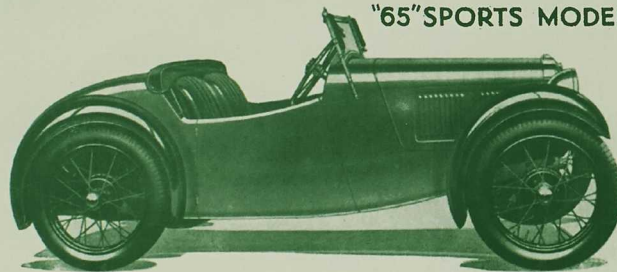
PRICE AT WORKS
DE LUXE SALOON
£128
FIXED HEAD SALOON
£118

EQUIPMENT

The cars can be finished to choice of Austin colours. Saloon de luxe and Sports model upholstered in best selected hide. Fixed head Saloon in leather cloth or wool rep. Open cars in leather cloth.

6 volt electric lighting and starting with hand starter switch. *†Chromium plated dip and switch head lamps, combined stop and tail lamp, direction indicators, carburettor air strangler, interior visor (on Saloon de luxe only), windscreen wiper, driving mirror, electric petrol gauge, speedometer, electric horn, number plates, spare wheel and tyre. †Stoneguard. Tools securely packed in special compartment. Triplex glass throughout. Triplex Toughened on Export Cars. *De luxe Saloon only. †On "65" Sports.

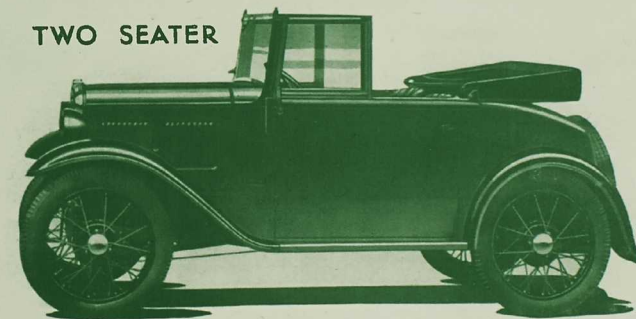
"65" SPORTS MODEL



The "65" Sports Two-Seater is designed and equipped to travel at a fast pace with smooth motion and economic petrol consumption. The seats are adjustable and the hood folds down very compactly.

PRICE AT WORKS
£152.

TWO SEATER



The Two Seater is a very comfortable car for two persons, with accommodation for luggage behind the seats. With the hood and side curtains in position the car is weatherproof.

PRICE AT WORKS
£105

INVEST IN AN AUSTIN — BRITAIN'S DEPENDABLE CAR

THE FAMOUS

Austin

SEVEN

SPECIFICATION

GENERAL DIMENSIONS. Wheel base 6 ft. 9 in. (2,057 mm.). Track, 3 ft. 4 in. (1,016 mm.).

ENGINE. 4-cylinder, water-cooled, detachable head. Bore, 2.2 in. (56 mm.); stroke, 3 in. (76 mm.). Total capacity, 45.6 cub. in. (747.5 c.c.); R.A.C. rating 7.8; b.h.p. 12 at 2,600 r.p.m.

The Sports Engine develops 21 b.h.p. at 4,400 r.p.m. The special cylinder head, giving a high compression ratio, is detachable and the valves are all on the near side. A high-lift camshaft is employed. A down-draught carburetter is fitted together with re-designed manifolding. A Burgess silencer is employed in the exhaust system.

FUEL SUPPLY. The tank has a capacity of 5 gallons (22 litres) and is most conveniently placed at the rear of the car. The supply to the engine is by petrol pump.

IGNITION. By coil and battery.

COOLING. By Thermo-Syphon and fan.

LUBRICATION. Engine lubrication is by means of a vane pump. Chassis by grease gun.

TRANSMISSION. Single plate clutch. Four speed gearbox. Synchro-mesh on top and third speeds. The ratios of engine to road wheels are: 1st speed, 22.94 to 1; 2nd, 13.85 to 1; 3rd, 8.73 to 1; top, 5.25 to 1. Gear changes are easily effected by a lever mounted centrally. Final drive is by spiral bevel gear. The rear axle is of the three-quarter floating type, with differential and torque tube.

SUSPENSION. Semi-elliptic transverse spring in front; those at the rear are quarter-elliptic. Shock absorbers front and rear. Specially bound springs on Sports model.

WHEELS. Wire with 3.50—19 Dunlop Tyres.

For Manufacturers Warranty and Terms of Business see Main Catalogue.

Reprinted
2007